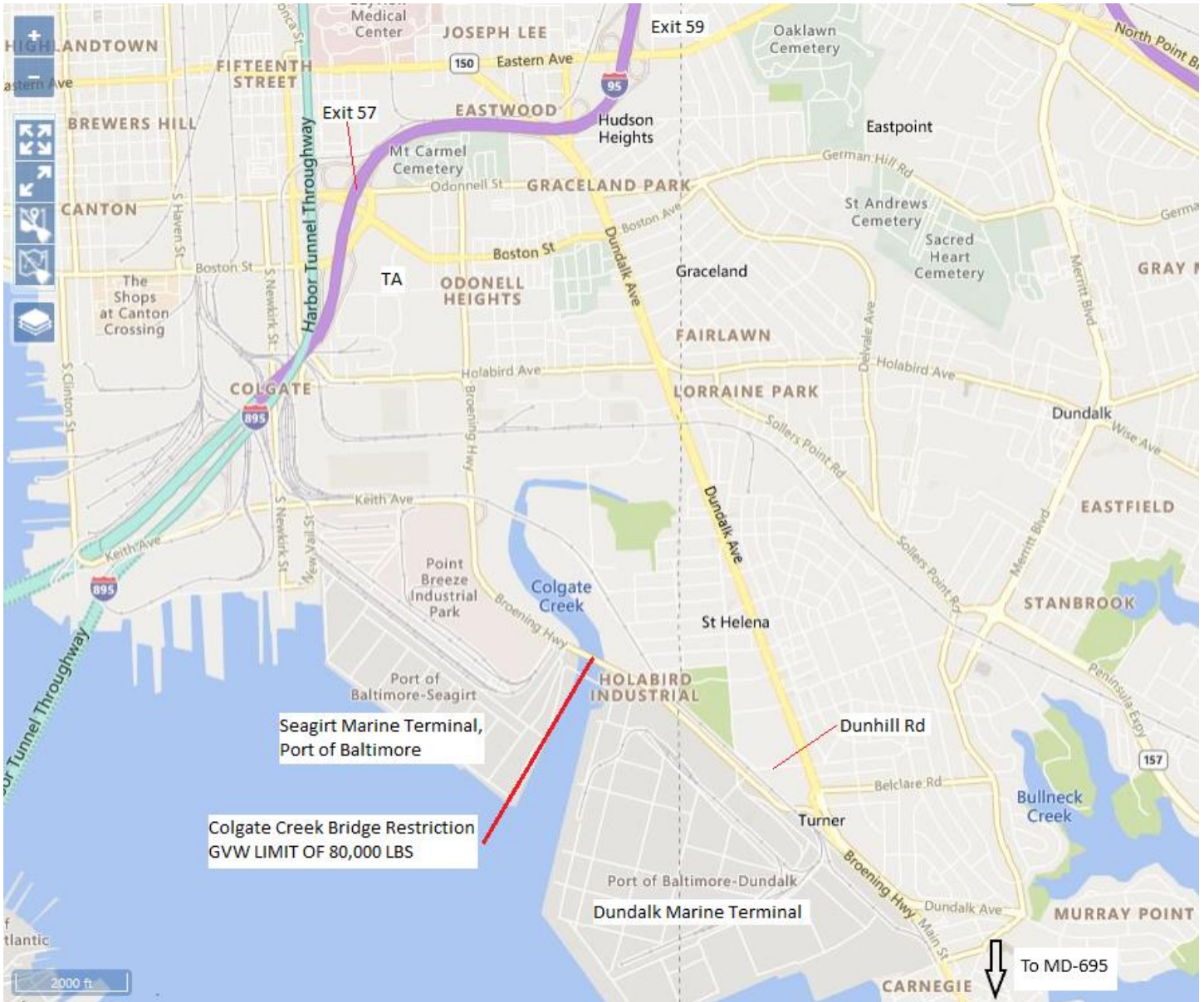


Maryland One

Trip Description directions for:

Dundalk Marine Terminal and Seagirt Marine Terminal, Port of Baltimore



Dundalk Marine Terminal

Keypoint locations for the Dundalk Marine Terminal are saved on the Maryland One Trip page.

When using Generate a Trip, type in any of these options to Start or End your trip at the Dundalk Marine Terminal.

Broening Hwy & 2700 Broening Hwy

Broening Hwy & DMT Truck Gate

Broening Hwy & Dundalk Terminal

Trip Definition ▲

Select an option from the list

Generate a Trip ▼

Pick a location on the map

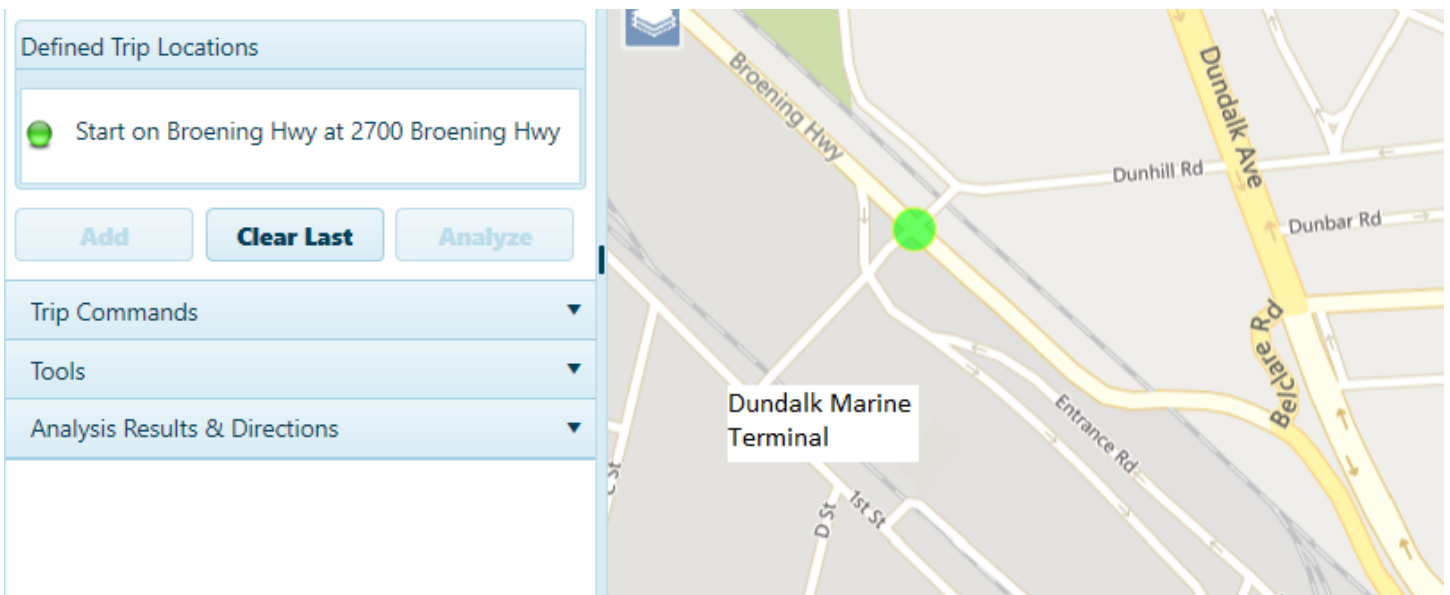
Intersection / Keypoint ▼

Broening Hwy & 2700 Broening Hwy ✕

No Offset or Entry ▼ 0.00 miles

Defined Trip Locations

Add **Clear Last** **Analyze**



When using Enter a Trip, type in “Dunhill Rd & DMT Truck Gate” to Start or End your trip at the Dundalk Marine Terminal.

Trip Definition ▲

Select an option from the list

Enter a Trip ▼

Start Go To End

Intersection / Keypoint ▼

Dunhill Rd & Dmt Truck Gate ✕

Heading Direction Implied ▼

No Offset or Entry ▼ 0.00 miles

Defined Trip Locations

Add **Clear Last** **Add Segment** **Analyze**

Defined Trip Locations

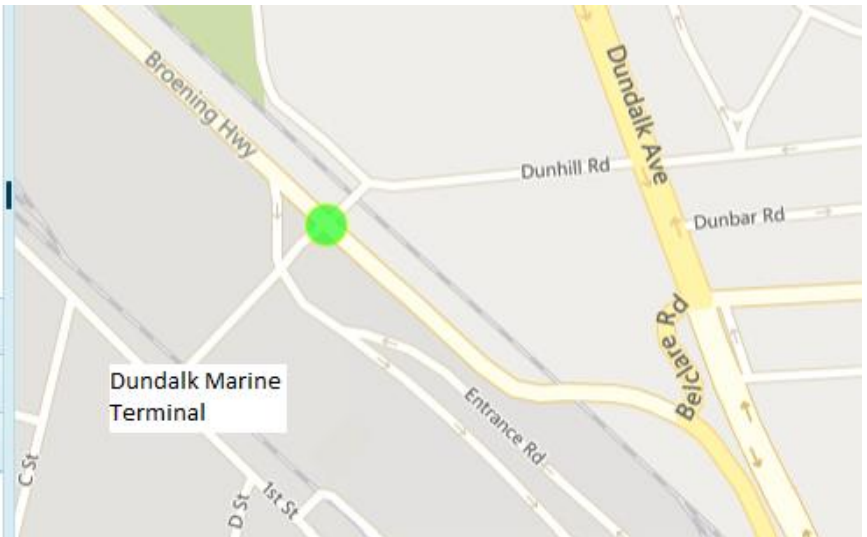
● Start on Dunhill Rd at Dmt Truck Gate

Add **Clear Last** **Add Segment** **Analyze**

Trip Commands ▼

Tools ▼

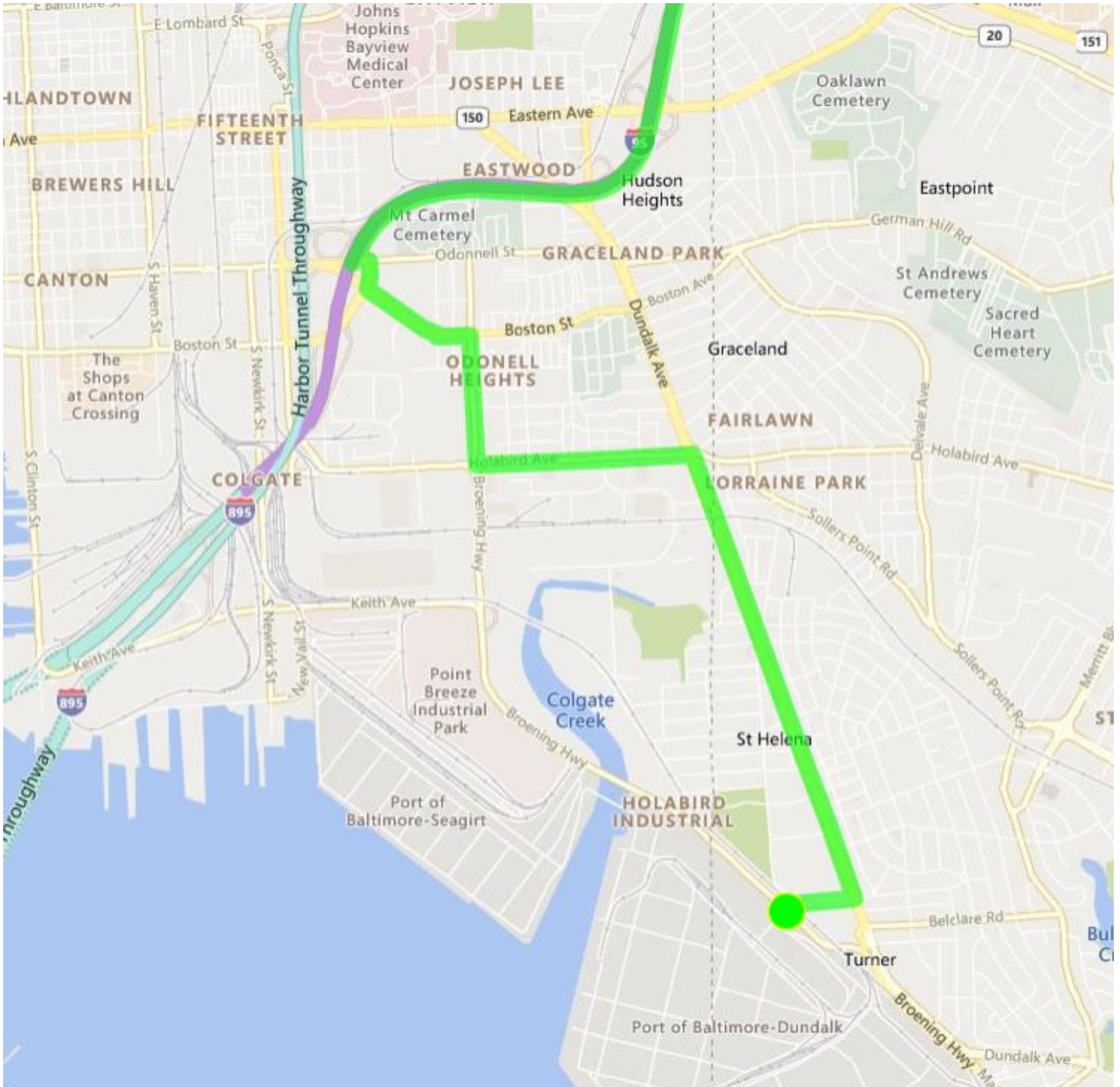
Analysis Results & Directions ▼



The map displays the Dundalk Marine Terminal area. A green dot is placed at the intersection of Dunhill Rd and Dmt Truck Gate. Other visible streets include Broening Hwy, Dundalk Ave, Dunbar Rd, Entrance Rd, and several smaller streets (C St, D St, 1st St). A label 'Dundalk Marine Terminal' is positioned near the bottom center of the map area.

When using Enter a Trip, type in “Dunhill Rd & DMT Truck Gate” to Start your trip at the Dundalk Marine Terminal then continue to I-95. Your trip description may vary based on your vehicle. Example:

- Start - Dunhill Rd & DMT Truck Gate
- Go To - Dundalk Ave
- Go To - Holabird Ave
- Go To - Broening Hwy
- Go To - Boston St
- Go To - Odonnell St Cutoff
- Go To - Interstate Ave
- Go To – I-95 (choose 0.42 @ I-95)



When using Enter a Trip, type in “Dunhill Rd & DMT Truck Gate” to End your trip at the Dundalk Marine Terminal. Your trip description may vary based on your vehicle. Example:

I-95

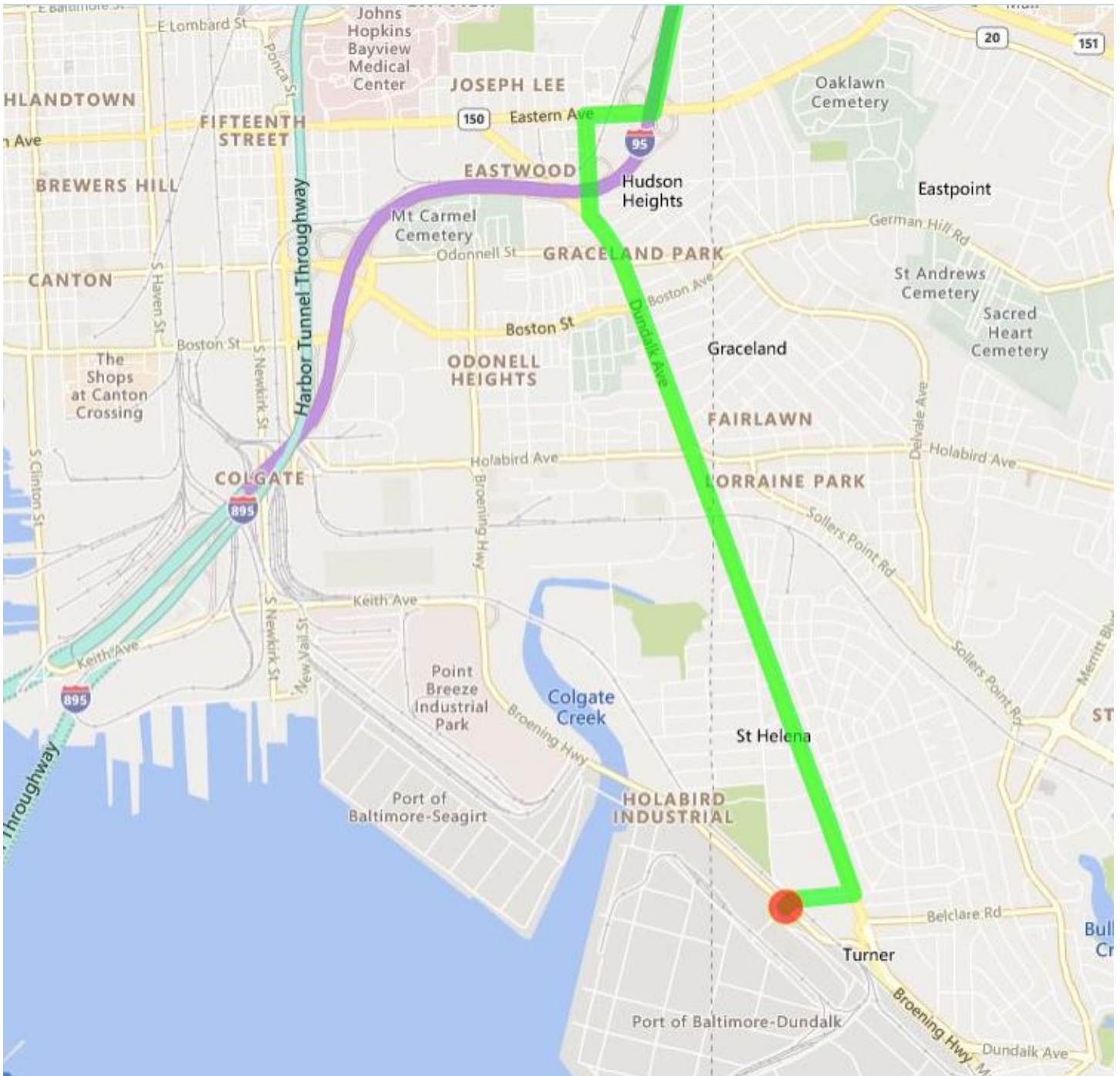
Go To – Eastern Ave (or) MD-150

Go To - Kane St

Go To - Dundalk Ave (choose 0.10 @ Dundalk Ave)

Go To - Dunhill Rd

End - DMT Truck Gate



Seagirt Marine Terminal

Keypoint locations for the Seagirt Marine Terminal are saved on the Maryland One Trip page.

When using Generate a Trip, type in any of these options to Start or End your trip at the Seagirt Marine Terminal.

Broening Hwy & 2300 Broening Hwy

Broening Hwy & Seagirt Marine Terminal

Trip Definition ▲

Select an option from the list

Generate a Trip ▼

Pick a location on the map

Intersection / Keypoint ▼

Broening Hwy & 2300 Broening Hwy

No Offset or Entry ▼ 0.00 miles

Defined Trip Locations

Add **Clear Last** **Analyze**

Defined Trip Locations

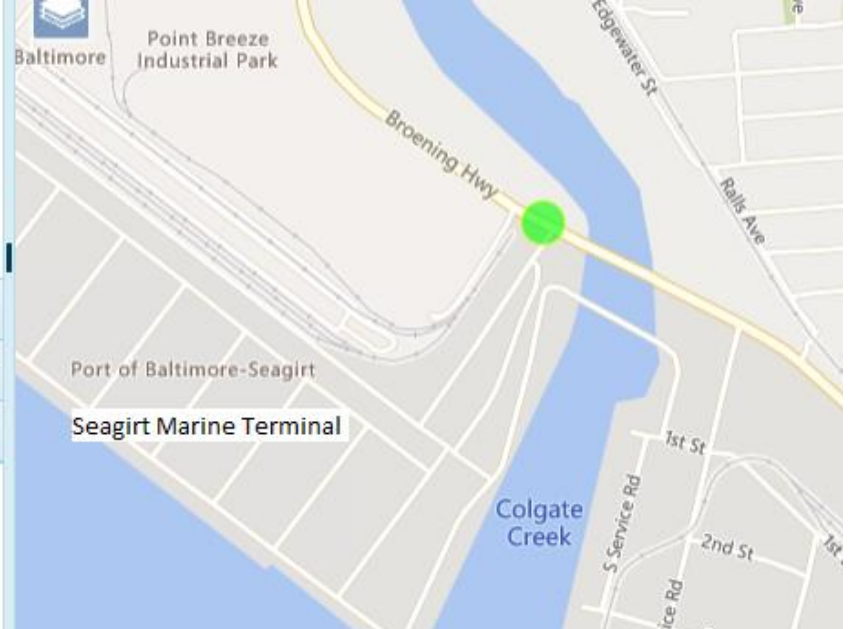
Start on Broening Hwy at 2300 Broening Hwy

Add **Clear Last** **Analyze**

Trip Commands ▼

Tools ▼

Analysis Results & Directions ▼



The map shows the Seagirt Marine Terminal area in Baltimore. A green dot is placed at the intersection of Broening Hwy and 2300 Broening Hwy. Other labeled streets include Edgewater St, Ralls Ave, S Service Rd, 1st St, and 2nd St. Landmarks include Point Breeze Industrial Park and Colgate Creek. The Port of Baltimore-Seagirt is also labeled.

When using Enter a Trip, type in “Broening Hwy & Seagirt Marine Terminal” to Start or End your trip at the Seagirt Marine Terminal.

Trip Definition ▲

Select an option from the list

Enter a Trip ▼

Start Go To End

Intersection / Keypoint ▼

Broening Hwy & Seagirt Marine Terminal ✕

Heading Direction Implied ▼

No Offset or Entry ▼ 0.00 miles

Defined Trip Locations

Add **Clear Last** **Add Segment** **Analyze**

Defined Trip Locations

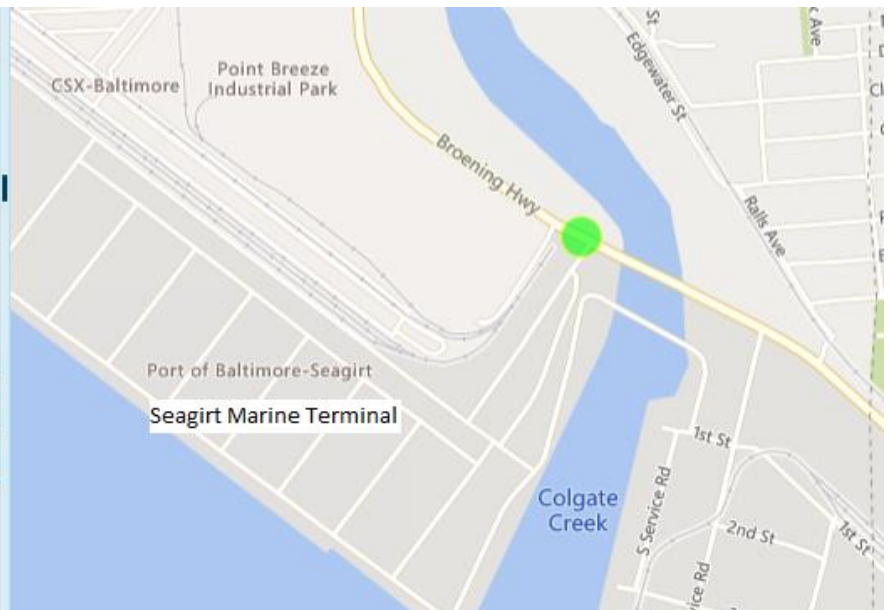
● Start on Broening Hwy at Seagirt Marine Terminal

Add **Clear Last** **Add Segment** **Analyze**

Trip Commands ▼

Tools ▼

Analysis Results & Directions ▼

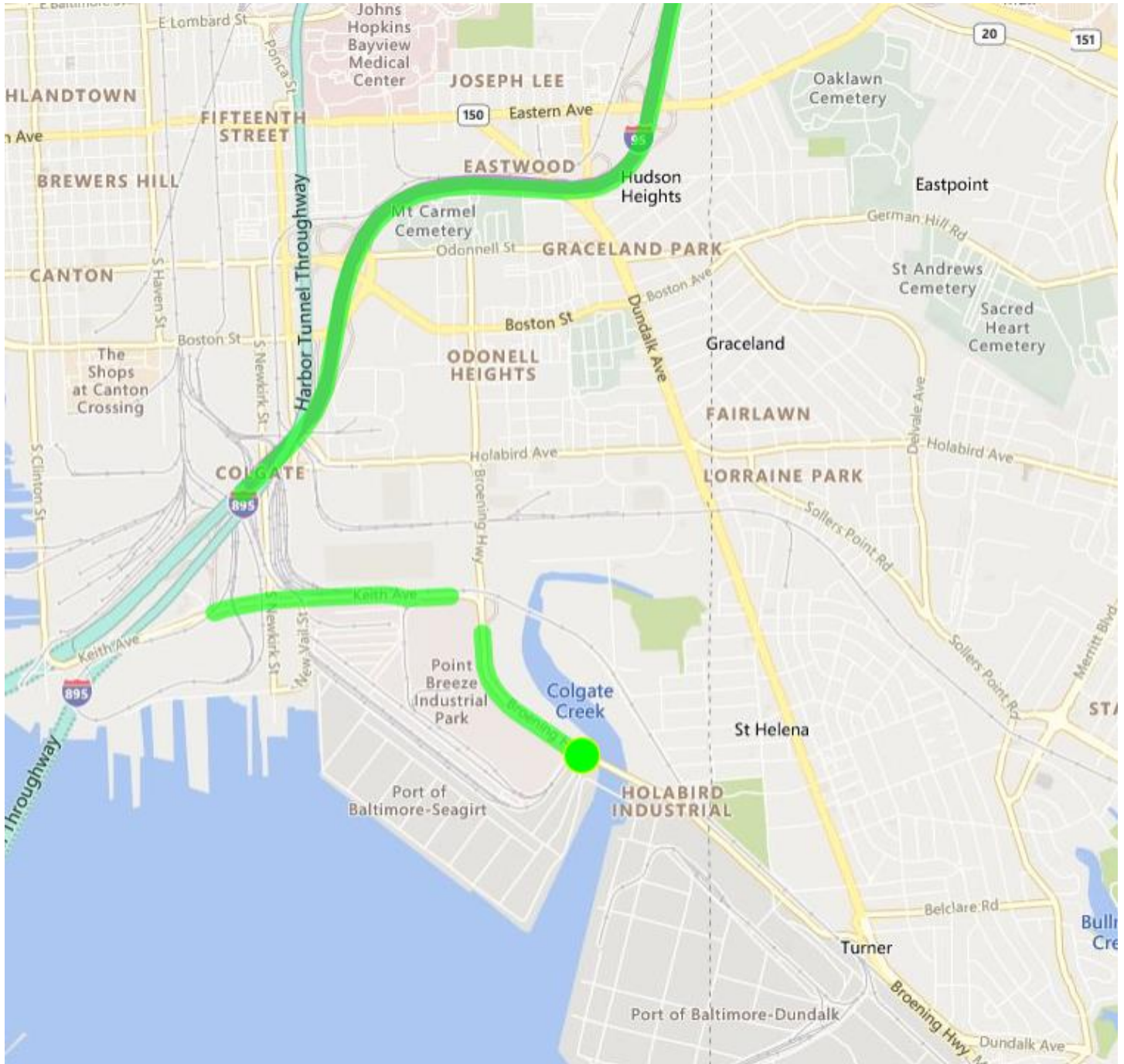


When using Enter a Trip, type in “Broening Hwy & Seagirt Marine Terminal” to Start your trip at the Seagirt Marine Terminal then continue to I-95. Your trip description may vary based on your vehicle. Example:

Start - Broening Hwy & Seagirt Marine Terminal

Go To - Keith Ave

Go To - I-95



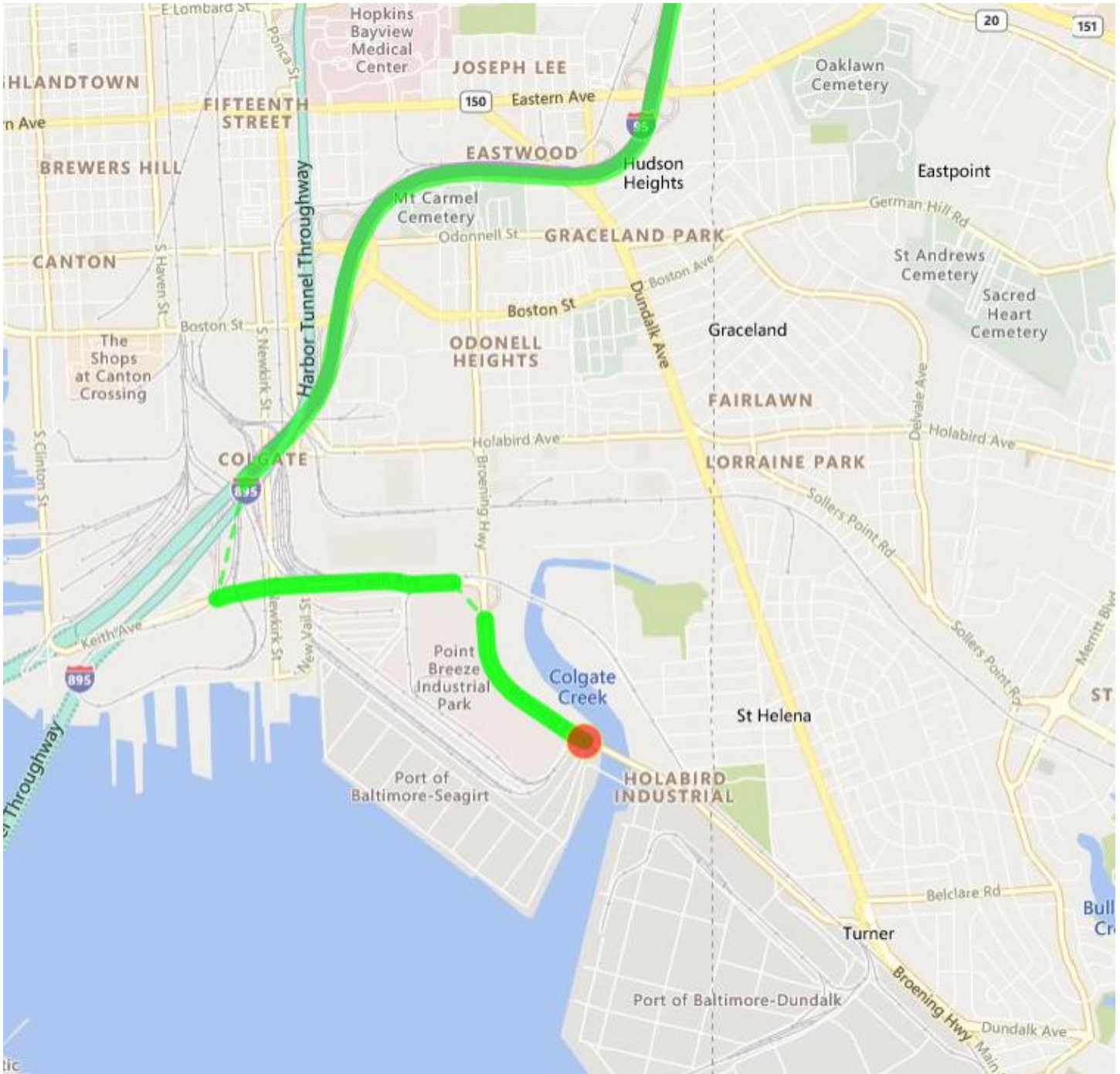
When using Enter a Trip, type in “Broening Hwy & Seagirt Marine Terminal” to End your trip at the Seagirt Marine Terminal. Your trip description may vary based on your vehicle. Example:

I-95

Go To - Keith Ave

Go To - Broening Hwy

End - Seagirt Marine Terminal



Colgate Creek Bridge Restrictions on Broening Highway

1. BROENING HIGHWAY OVER COLGATE CREEK. GVW LIMIT OF 80,000 LBS. VEHICLES WEIGHING MORE THAN 80,000 LBS ARE NOT PERMITTED TO USE THIS STRUCTURE. BRIDGE BC-4202.
2. BROENING HIGHWAY OVER COLGATE CREEK. NORTHSIDE OF THE BRIDGE CLOSED. SOUTHSIDE OF BRIDGE WILL HAVE 1 LANE IN EACH DIRECTION. MAXIMUM WIDTH 10 FEET.

Exiting the Dundalk Marine Terminal, you may not turn left and head west towards Keith Ave or I-95 Exit 56 / 57 if your vehicle is over any of these limits.

Exiting the Seagirt Marine Terminal, you may not turn right and head east towards Dunhill Rd / Dundalk Ave or MD-695 Exit 44 if your vehicle is over any of these limits.

